



**X<sup>®</sup> FORCE<sup>™</sup>**

SPECIALLY DESIGNED FOR  
OFF-ROAD VEHICLES THAT  
DRIVE ON ALL TERRAINS AND  
REQUIRE MAXIMUM MOBILITY

**MICHELIN**  
**X<sup>®</sup> FORCE<sup>™</sup> ZH<sup>™</sup> / XZH2 R**

**MULTI  
POSITION**



**315/80 R 22.5**

**13 R 22.5**



RADIO FREQUENCY IDENTIFICATION  
CHIP INTEGRATED



**RELIABLE AND DURABLE  
IN CHALLENGING CONDITIONS**

**ROBUSTNESS AND TRACTION  
ON WORKSITES AND QUARRIES**



**MICHELIN**

*A better way forward*



# MICHELIN X<sup>®</sup> FORCE<sup>™</sup> ZH<sup>™</sup> / XZH2 R



## BUSINESS EFFICIENCY

### OVERCOME DIFFICULT TERRAIN

- Good vehicle mobility and uptime
- Excellent resistance to accidental damage
- Optimised traction
- Excellent retread acceptance level even when used in extreme conditions of use

#### Traction on all types of surface:

- wide and deep grooves
- large, offset side tread-blocks for efficient self-cleaning

Special rubber compound for high resistance to accidental damage

Reinforced tyres, retreadable with MICHELIN Remix



## SAFETY

### EXPERIENCE ITS STRENGTH

- Optimised casing protection
- Robust tread pattern

Reinforced metallic plies improve resistance to accidental damage  
Reinforced sidewalls with deflectors



## ECOLOGY

### EXTEND THE LIFE OF YOUR TYRES

- MICHELIN X<sup>®</sup> FORCE<sup>™</sup> Remix tyres offer similar levels of performance as new MICHELIN X<sup>®</sup> FORCE<sup>™</sup> tyres whilst using up to 60kg less material
- Tyres manufactured in line with environmental standards

Up to 85% retreading rate <sup>(1)</sup>

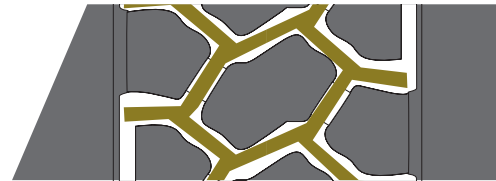
All MICHELIN XZH2 R tyres are manufactured in European-based ISO 14001-certified factories

(1) Internal Michelin source. Number of retreaded tyres out of number of Y range tyres presented in France.

## MICHELIN X<sup>®</sup> FORCE<sup>™</sup> ZH<sup>™</sup> / XZH2 R

REGROOVING DEPTH	APPROXIMATE REGROOVING WIDTH	SUGGESTED BLADE
H = 4 mm	12 - 14 mm	R4

REGROOVING PATTERN



## TECHNICAL SPECIFICATIONS

TREAD PATTERN AND DIMENSION	TYPE	LOAD/SPEED INDEX	NOMINAL LOAD PER AXLE (SINGLE TYRE) (KG)	NOMINAL LOAD PER AXLE (TWIN TYRE) (KG)	NOMINAL SPEED
13 R 22.5 MICHELIN X <sup>®</sup> FORCE <sup>™</sup> XZH2 R	TL	154/150G	7500	13400	90 KM/H (56MPH)
315/80 R 22.5 MICHELIN X <sup>®</sup> FORCE <sup>™</sup> ZH <sup>™</sup>	TL	156/150G	8000	13800	90 KM/H (56MPH)

EUROPEAN LABELLING



PROFESSIONAL OFF-ROAD

MICHELIN products are manufactured from high quality materials to high tolerances, ensuring a uniform and consistent performance. Correct application, fitting, inflation and regular inspection of the product are essential to its safe and efficient operation. Remix and the tyre designations mentioned are trademarks of MICHELIN. For further information about any of the products in this document, contact your local MICHELIN representative or Technical Liaison helpline on 0845 366 1535.

### FOR MORE INFORMATION:



**INTERNET**  
trucks.michelin.co.uk



**MYACCOUNT**  
myaccount.michelin.eu

### CONNECT:



**SEE THE TESTIMONIALS AT**  
www.youtube.com/michelintrucktyres



**LINKEDIN**  
Michelin Trucks and Bus tyres Europe



**INSTAGRAM**  
@michelintruck



**FOLLOW US**  
@MichelinTruckUK

### CONTACT US:



**BY TELEPHONE**  
0845 366 1535

