

# MICHELIN X<sup>®</sup> WORKS™ HD Z&D



RADIO FREQUENCY IDENTIFICATION  
CHIP INTEGRATED

## MULTI POSITION



315/80 R 22.5  
13 R 22.5

M+S MARKING

## DRIVE AXLE



315/80 R 22.5  
13 R 22.5



M+S MARKING  
3PMSF MARKING



**MINIMISE YOUR  
TYRE COSTS**



**MAXIMISE  
VEHICLE UPTIME**

**MAXIMISED PRODUCTIVITY  
FOR WORKS ACCESS AND  
SITE OPERATIONS**



**MICHELIN**

A better way forward

<sup>(1)</sup> Radio frequency identification chip integrated.

# MICHELIN X<sup>®</sup> WORKS<sup>™</sup> HD Z & D



## BUSINESS EFFICIENCY

### TRANSPORTATION WITH REDUCED RISKS

- **Improved resistance to accidental damage\***
  - Robust tread with improved resistance to tread tearing.
  - Reinforced shoulder area with improved resistance to lateral impact damage.
- **Off-road mobility thanks to aggressive tread pattern design with wide and deep grooves**
- **Increased load carrying capacity for 13 R 22.5 with nominal Load/Speed Index of 156/151K and a unique point of 158/152G**
- **Excellent retreadability**
  - Robust sidewalls for optimised protection of the casing.
- **Further optimise your tyre costs with Michelin Multi-life management: Regrooving and MICHELIN REMIX X<sup>®</sup> WORKS<sup>™</sup> XZY & XDY**

\*vs 315/80R22.5 MICHELIN XZY-2 & XDY3



## SAFETY

### DRIVE WITH CONFIDENCE

- **Reinforced tread and casing design to improve resistance to accidental damage**
- **Winter mobility supported by M+S on both Steer and Drive tyres**



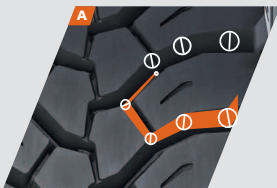
## ECOLOGY

### A GREENER WAY TO TRANSPORT GOODS

- **Extend the life of your tyres through retreading with MICHELIN REMIX and save up to 50 kg of raw materials**
  - Retread acceptance rate of up to 85%\*\*
- **Regrooving enables the use of the tyre for longer in its most fuel efficient condition**
- **All MICHELIN X<sup>®</sup> WORKS<sup>™</sup> tyres are manufactured in ISO 14001 certified plants**

\*\*Retreading rate at MICHELIN REMIX factories for MICHELIN X<sup>®</sup> WORKS<sup>™</sup> in Europe in 2016

#### Less stone retention



Progressive, variable-width grooves.

**A MICHELIN X<sup>®</sup> WORKS<sup>™</sup> HD D**

#### Improved water drainage and mud evacuation



Optimised groove pattern.

**B MICHELIN X<sup>®</sup> WORKS<sup>™</sup> HD Z**

#### Improved resistance to wear and tear



Rounded tread block profile to reduce tread tearing.

## TECHNICAL INFORMATION

### EUROPEAN LABELLING

TREAD PATTERN AND DIMENSION	TYPE	LOAD/SPEED INDEX	UNIQUE POINT	MICHELIN PREFERRED RIM	SPECIFIC MARKINGS			
13 R 22.5 MICHELIN X <sup>®</sup> WORKS <sup>™</sup> HD Z	TL	156/151K	158/152G	9.00	M+S	D	B	
13 R 22.5 MICHELIN X <sup>®</sup> WORKS <sup>™</sup> HD D	TL	156/151K	158/152G	9.00	M+S	D	B	
315/80 R 22.5 MICHELIN X <sup>®</sup> WORKS <sup>™</sup> HD Z	TL	156/150K	-	9.00	M+S	C	B	
315/80 R 22.5 MICHELIN X <sup>®</sup> WORKS <sup>™</sup> HD D	TL	156/150K	-	9.00	M+S	D	B	

## MICHELIN X<sup>®</sup> WORKS<sup>™</sup> HD Z & D IN 22.5

### REGROOVING PATTERN

TREAD PATTERN AND DIMENSION	THEORETICAL REGROOVING DEPTH	APPROXIMATE REGROOVING WIDTH	SUGGESTED BLADE	
13 R 22.5 MICHELIN X <sup>®</sup> WORKS <sup>™</sup> HD Z	4 mm	8 - 10 mm	R3	
13 R 22.5 MICHELIN X <sup>®</sup> WORKS <sup>™</sup> HD D	4 mm	6 - 8 mm	R3	
315/80 R 22.5 MICHELIN X <sup>®</sup> WORKS <sup>™</sup> HD Z	4 mm	8 - 10 mm	R3	
315/80 R 22.5 MICHELIN X <sup>®</sup> WORKS <sup>™</sup> HD D	4 mm	6 - 8 mm	R3	

MICHELIN products are manufactured from high quality materials to high tolerances, ensuring a uniform and consistent performance. Correct application, fitting, inflation and regular inspection of the product are essential to its safe and efficient operation. Remix and the tyre designations mentioned are trademarks of MICHELIN. For further information about any of the products in this document, contact your local MICHELIN representative or Technical Liaison helpline on 0845 366 1535.

### FOR MORE INFORMATION:



**INTERNET**  
trucks.michelin.co.uk



**MYACCOUNT**  
myaccount.michelin.eu

### CONNECT:



**SEE THE TESTIMONIALS AT**  
[www.youtube.com/michelintrucktyres](http://www.youtube.com/michelintrucktyres)



**LINKEDIN**  
Michelin Trucks and Bus tyres Europe



**INSTAGRAM**  
@michelintruck



**FOLLOW US**  
@MichelinTruckUK

### CONTACT US:



**BY TELEPHONE**  
0845 366 1535

