



 **X-MULTI™**

Intended for long and short distance
on all types of winter road

MICHELIN XFN 2 +

THE NEW REFERENCE FOR
GRIP ON WINTER STEER TYRES

FRONT AXLE



315/80 R 22,5







INCREASED SECURITY

HIGH GRIP
ON WINTER ROADS!



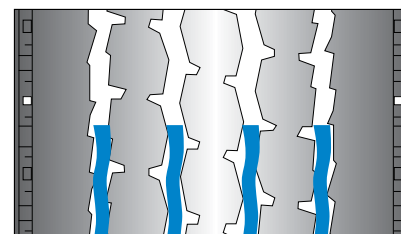
MICHELIN XFN 2 +

SAFETY	BUSINESS EFFICIENCY	ECOLOGY
<p> "Transport safely on winter roads!"</p> <ul style="list-style-type: none"> • Excellent lateral grip when cornering on snow and wet roads • Short breaking distance • Durability in harsh conditions <p> <ul style="list-style-type: none"> • M+S marking  • 3PMSF • New patented technology with crossed sipes • Three-dimensional sipes down to half tread depth </p>	<p> "Long mileage!"</p> <ul style="list-style-type: none"> • Long mileage • Increased flexibility <p> <ul style="list-style-type: none"> • New optimized tread design with three-dimensional sipes • Suitable for a variety of transports like timber transport, distribution, general cargo, refrigerated... </p>	<p> "A greener way to transport!"</p> <ul style="list-style-type: none"> • MICHELIN Remix drive or all position tyres perform as well as new MICHELIN tyres while saving 48 kg of material • Regroove the tyre and extend its lifespan when it consumes the least fuel <p> <ul style="list-style-type: none"> • Up to 92% retreading rate⁽¹⁾ • All MICHELIN XFN 2 + tyres are manufactured in Europe-based ISO 14001 - certified factories </p> <p><small>⁽¹⁾ Internal MICHELIN source. Average retreading acceptance rate calculated using the XFN 2 + casings sent in for Remix</small></p>

MICHELIN XFN 2 +





Theoretical regrooving depth	Width	Blade
H = 3 mm	6 to 8 mm	R3

Regroovable and retreadable in MICHELIN Remix®



REGROOVING DESIGN

TECHNICAL DATA

Size and tread pattern	Load and speed index	Unique point	Recommended rim	EUROPEAN LABELLING		
						
315/80 R 22.5 XFN 2 +	156/150L	—	9.00	D	C	 72 dB



Learn more,
go to www.trucks.michelin.eu
and  www.youtube.com/michelintrucktyres

