



**X<sup>®</sup> MULTI<sup>™</sup>**

DESIGNED FOR NATIONAL AND REGIONAL OPERATIONS ON ALL TYPES OF ROAD

# MICHELIN X<sup>®</sup> MULTI<sup>™</sup> T2

TRAILER  
AXLE



385/55 R 22.5

M+S MARKING



RADIO FREQUENCY IDENTIFICATION  
CHIP INTEGRATED



**CUT OPERATING COSTS**

20% INCREASED MILEAGE POTENTIAL\*

**IMPROVED LONGEVITY\* AND MOBILITY  
IN ALL CLIMATIC CONDITIONS**



**MICHELIN**

*A better way forward*

\* Internal test (2015): tractor & semi trailer 3 axles fitted with 385/55 R 22.5 MICHELIN X<sup>®</sup> MULTI<sup>™</sup> T2 compared with tractor & semi trailer 3 axles fitted with 385/55 R 22.5 MICHELIN X<sup>®</sup> MULTI<sup>™</sup> T



# MICHELIN X® MULTI™ T2



## BUSINESS EFFICIENCY

### REDUCE YOUR OPERATING COSTS

- 20% increased mileage potential\*
- Lower cost per mile\*
- Suitable for all road surfaces
- Low rolling resistance - European labelling B

\* Internal test (2015): tractor & semi trailer 3 axles fitted with MICHELIN 385/55 R 22.5 X® MULTI™ T2 compared with tractor & semi trailer 3 axles fitted with MICHELIN 385/55 R 22.5 X® MULTI™ T

- CARBION™.
- REGENION™ - Tread pattern is more closed and rigid, improving mileage potential and fuel consumption.
- Increased tread depth (+1.8 mm vs 385/55 R 22.5 X® MULTI™ T) and tread width (+6 mm vs 385/55 R 22.5 X® MULTI™ T).
- Stone ejectors in the grooves in the tread.



## SAFETY

### SAFE TRANSPORTATION WHATEVER THE WEATHER CONDITION

- High level of grip throughout the tyre's life
- M+S markings
- REGENION™ - longitudinal grooves emerge over the tyre's life for optimised grip.
  - The holes designed in the tread improve grip on wet surfaces by resulting in a good penetration of water in the hidden circumferential grooves emerge over the tyre's life for enhanced mobility.



## ECOLOGY

### A GREENER WAY TO TRANSPORT GOODS

- Retreading and regrooving save materials and fuel
- Tyres manufactured in compliance with ISO14001 environmental standards
- Low level of noise thanks to more compact tread pattern. It leads to less noise thanks to reduced land / sea volume and less movement of blocks.
- Robustness of MICHELIN casing thanks to a compact tread pattern that makes it more robust.

R.C.S. 352.321.285 - M.F.P. Michelin R.C.S. 855.200.507 Clermont-Fd - 01/2017

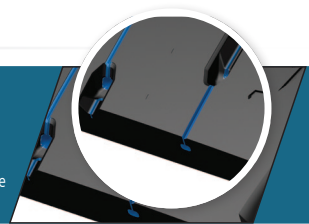
## Carbion™

A material resulting from an innovative mixing process in which certain tread components are mixed when liquid creating a more uniform, material. This material increases mileage performance of the tyre and improves its rolling resistance to allow fuel savings.



## Regenion™

Self-regenerating tread blocks, supported by our mold 3D metal printing techniques, providing solid grip throughout tyre's lifetime and conditions.



## TECHNICAL INFORMATION

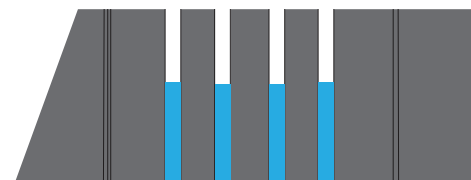
### EUROPEAN LABELLING

TREAD PATTERN AND DIMENSION	TYPE	LOAD/SPEED INDEX	ORIGINAL TREAD DEPTH	SPECIAL MARKINGS	MICHELIN PREFERRED RIM			
385/55 R 22.5 MICHELIN X® MULTI™ T2	TL	160K	14.9mm	M+S	11.75	B	B	70 dB

## MICHELIN 385/55 R 22.5 X® MULTI™ T2

THEORETICAL REGROOVING DEPTH	APPROXIMATE REGROOVING WIDTH	SUGGESTED BLADE
3 mm	8 - 10 mm	R3

### REGROOVING PATTERN



Regroovable and retreadable **MICHELIN** **Remix** on trailer axle.

MICHELIN products are manufactured from high quality materials to high tolerances, ensuring a uniform and consistent performance. Correct application, fitting, inflation and regular inspection of the product are essential to its safe and efficient operation. Remix and the tyre designations mentioned are trademarks of MICHELIN. For further information about any of the products in this document, contact your local MICHELIN representative or Technical Liaison helpline on 0845 366 1535.

### FOR MORE INFORMATION:



**INTERNET**  
trucks.michelin.co.uk



**MYACCOUNT**  
myaccount.michelin.eu

### CONNECT:



**SEE THE TESTIMONIALS AT**  
www.youtube.com/michelintrucktyres



**LINKEDIN**  
Michelin Trucks and Bus tyres Europe



**INSTAGRAM**  
@michelintruck



**FOLLOW US**  
@MichelinTruckUK

### CONTACT US:



**BY TELEPHONE**  
0845 366 1535

