

MICHELIN

AGILIS³

***YOUR SERVICE PARTNER
FOR LONGER***



MICHELIN



The **Michelin Agilis 3** provides a high level of safety on wet roads and excellent energy efficiency (fuel economy and reduction of CO2 emissions), all while maintaining the robustness and durability you can expect from every Michelin tyre.

SAFETY MADE TO LAST

- Market-leading in wet braking performance from the first to the last kilometre.
- 11% Shorter wet braking when tyre has been worn¹
- Unique kerbing shield design protects against sidewall damage.

EVERY DROP COUNTS

- 12% superior rolling resistance, plus 90ml/100km less fuel consumption and 228g/100km less CO2 emission, than average competitors. This gives your business an environmental advantage.²

YOUR SERVICE PARTNER FOR LONGER

- Up to 25% more tyre life vs previous generation³
- Less downtime, therefore more savings for you and your business

BENEFITS OF THE

MICHELIN / AGILIS ³

EXCELLENT WET BRAKING PERFORMANCE

Excellent wet braking performance from the first to the last kilometre thanks to EverGrip Technologies¹

LESS FUEL CONSUMPTION

12% superior rolling resistance resulting in less fuel consumption²

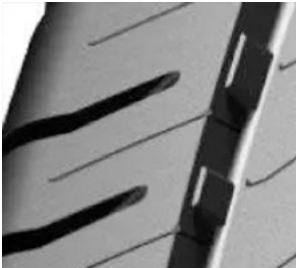
MORE TYRE LIFE

25% increase in mileage potential³



MICHELIN / AGILIS ³

MICHELIN AGILIS 3 PROVIDES A HIGH LEVEL OF SAFETY AND EXCELLENT ENERGY EFFICIENCY



STONE EJECTOR

Prevents stone retention, resulting in improved service life.



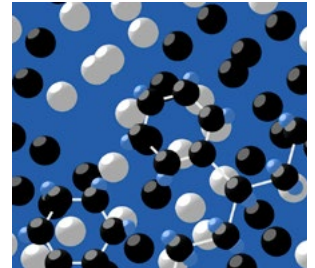
U SHAPE GROOVES

Grooves "side walls" are more 'vertical', which increases void ratio at 2mm remaining tread depth & allows higher water evacuation.



SIDEWALL SHIELDS

Made with an Abrasion-resistant rubber compound. These shields give added protection without compromising the casing flexibility.

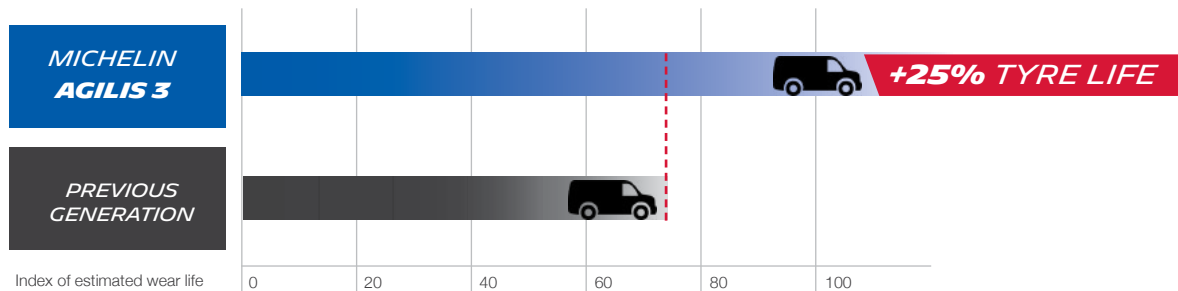


INNOVATIVE POLYMER

Allows higher density of silica & carbon black materials leading to better wet grip.

MILEAGE COMPARISON

TAKE CARE OF BOTH YOUR **BUSINESS** AND YOUR **CARBON FOOTPRINT** AT THE SAME TIME



¹ Wet braking test, conducted by TUV SUV Product Service on Michelin's request, between 80 and 20 kph, August 2019, on dimension 235/65R16115/113 R on LCV MB Sprinter 316CDI comparing MICHELIN AGILIS 3 versus the latest competitor tyres available at the time of testing: CONTINENTAL CONTIVANCONTACT 100; GOODYEAR EFFICIENTGRIP CARGO; PIRELLI CARRIER; HANKOOK VANTRA LT RA18

² Rolling Resistance Test performed at Thailand Automotive Institute and certified by TUV Rheinland Thailand Ltd, on Michelin's request, in December 2019, on dimension 215/70R15C. Comparing MICHELIN AGILIS 3 RC versus other competitor brands.

³ Unit weight of MICHELIN AGILIS 3 has been reduced by up to 1,6kg per tyre vs the MICHELIN AGILIS+

DIMENSIONS AND TECHNICAL SPECIFICATIONS

ITEM	RIM	SIZE	DESCRIPTION	LOAD	SPEED
644269	14	185R14C	185R14C 102/100R AGILIS 3	102	R
985538	14	195R14C	195R14C 106/104R AGILIS 3	106	R
776408	14	205/75R14C	205/75R14C 109/107R AGILIS 3	109	R
675949	15	195/70R15C	195/70R15C 104/102S AGILIS 3	104	S
666924	15	195R15C	195/80R15C 108/106S AGILIS 3	108	S
112637	15	205/65R15C	205/65R15C 102/100T AGILIS 3	102	R
691041	15	205/70R15C	205/70R15C 106/104S AGILIS 3	106	S
533181	15	215/65R15C	215/65R15C 104/102T AGILIS 3	104	T
215956	15	215/70R15C	215/70R15C 109/107S AGILIS 3	109	S
749292	15	225/70R15C	225/70R15C 112/110S AGILIS 3	112	S
235329	16	195/65R16C	195/65R16C 104/102R (100T) AGILIS 3	104	R
013585	16	195/75R16C	195/75R16C 107/105T AGILIS 3	107	T
126305	16	205/65R16C	205/65R16C 107/105T (103H) AGILIS 3	107	T
421605	16	205/75R16C	205/75R16C 113/111R (110T) AGILIS 3	113	R
209813	16	215/65R16C	215/65R16C 109/107T AGILIS 3	109	T
387980	16	215/70R16C	215/70R16C 108/106T AGILIS 3	108	T
830873	16	215/75R16C	215/75R16C 113/111T AGILIS 3	113	T
230527	16	225/65R16C	225/65R16C 112/110R AGILIS 3 DT	112	R
694531	16	225/75R16C	225/75R16C 121/120R AGILIS 3	121	R
966519	16	235/65R16C	235/65R16C 115/113T AGILIS 3	115	T
385640	16	235/65R16C	235/65R16C 121/119R AGILIS 3	121	T
739269	17	215/60R17C	215/60R17C 109/107T (104H) AGILIS 3	109	T
146237	17	235/60R17C	235/60R17C 117/115T AGILIS 3	117	T





MICHELIN



For more information visit:
tyreline.co.nz